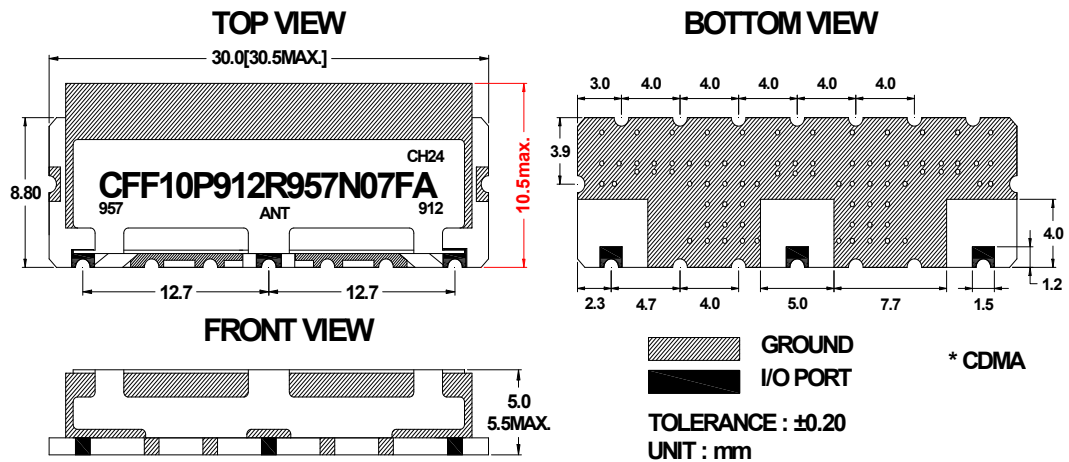


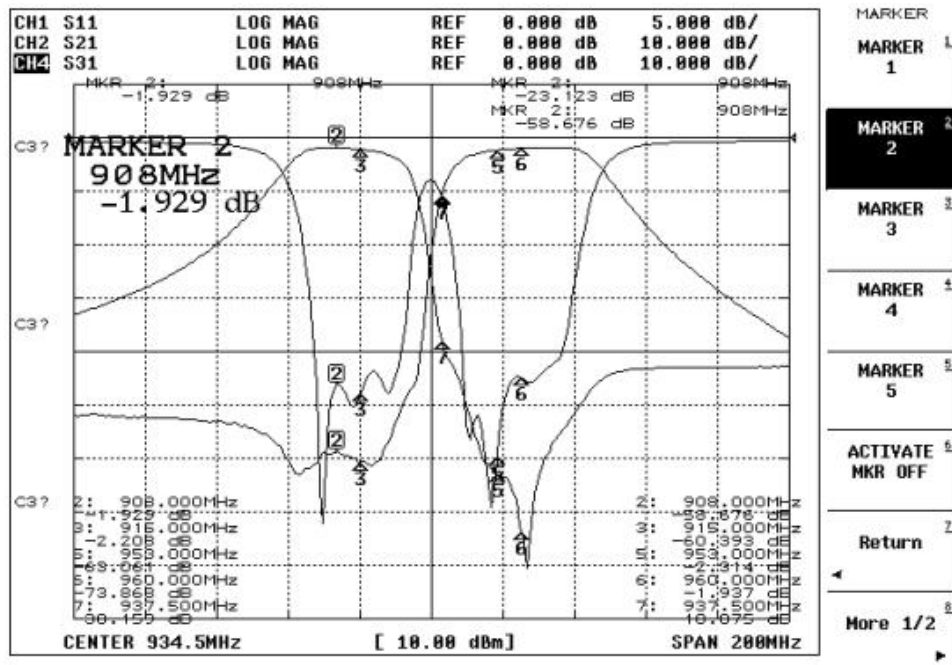
Electrical Specification

ITEMS	ANT >> Low	ANT >> High	UNIT
Center Frequency [fo]	912.0	957.0	MHz
Bandwidth [BW]	fo ±3.5[908.5 ~915.5]	fo ±3.5[953.5 ~960.5]	MHz
Insertion Loss in BW	2.5	2.5	dB max
Ripple in BW	0.5	0.5	dB max
Return Loss in BW	20.0	20.0	dB min
Attenuation <input checked="" type="checkbox"/> Absolute Value <input type="checkbox"/> Relative Value	50.0 dB min. @[953.5 ~960.5]	60.0dB min. @[908.5 ~915.5]	MHz
	10.0 dB min. @ [937.5 ~]	10.0dB min. @ [937.5~]	MHz
	dB min. @ [~]	dB min. @ [~]	MHz
	dB min. @ [~]	dB min. @ [~]	MHz
Group Delay Variation			ns max
Input Power	3.0		W max.
In/Out Impedance	50 Ω		
Operation Temperature Range	-40°C to +85°C		

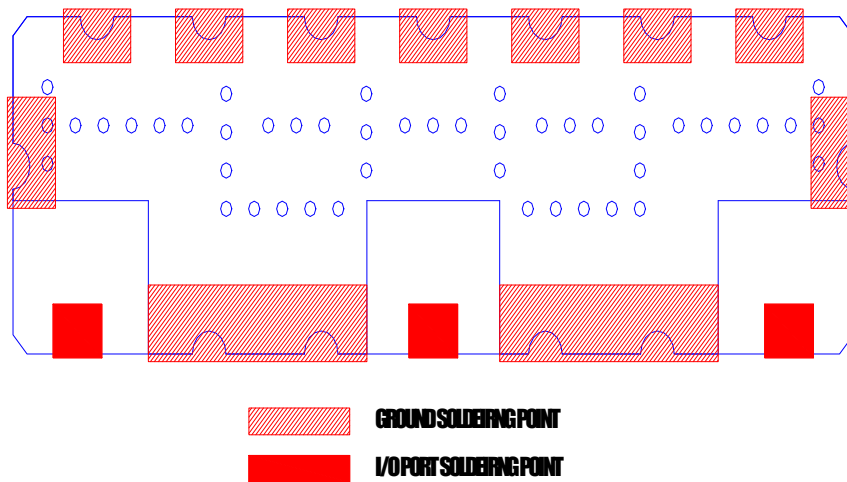
Mechanical Specification



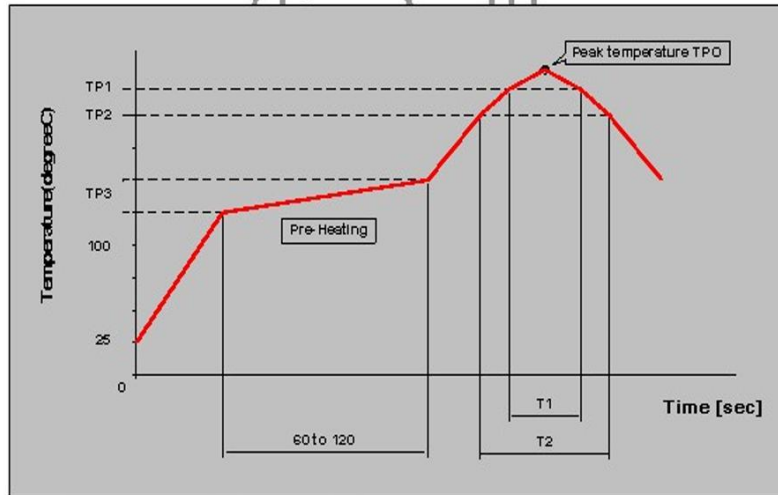
Plot Data



Recommended PC Board Pattern



 Soldering Condition



Measuring point of temperature : IN-OUT Terminals of The Device

Reflow Soldering : Both Convection and Infrared Rays, Hot Air and Hot Plate

Reflow standard condition	TP0 (°C)	TP1 (°C)	T1 (s)	TP2 (°C)	T2 (s)	TP3 (°C)
Sn-3Ag-0.5 solder	245±/5	220	30 to 60	—	—	150 to 180
Test condition of reflow heat resistance	260+5/-0	240	20	220	70	150 to 180